

CHIPKO-G TILE PRIME



CWC
CONCRETE EXPERTS

Concrete Works
Construction Chemicals
Private Limited

CHIPKO-G TILE PRIME

At CWCC our commitment to excellence extends beyond just tile adhesives and grouts - it also encompasses our high-quality Tile Primers. Crafted to meet the most stringent quality standards and backed by independent test certificates, our Tile Primers play a pivotal role in ensuring long lasting and flawless tile installations.

Whether you are working with ceramic tiles, vitrified tiles, natural stones, or any other type of tile, indoors or outdoors, in residential or commercial projects, or even tackling large-scale infrastructure undertakings, CHIPKO-G Tile Prime is the natural choice. Our expert team is dedicated to assisting you in selecting the perfect primer solution that aligns with your specific needs and project requirements.

CHIPKO-G Tile Prime can be found in multitude of infrastructure developments, commercial establishments and residential properties worldwide. They are renowned for their compatibility and high-performance attributes, ensuring that your tile installations stand the test of time. From preparing surfaces for tiling to enhancing tile adhesion, CWCC is your trusted partner in achieving the best possible tile primer solution.

Choose CHIPKO-G Tile Prime for a foundation that elevates your tile installations to unmatched levels of quality and durability. Our commitment to innovation, quality and performance ensures that your tiling projects are backed by a solid and reliable base, promising enduring excellence in every detail.

Key Features of

CHIPKO-G TILE PRIME



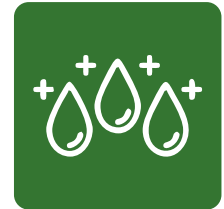
Improved Adhesion

Reduced Risk of Delamination



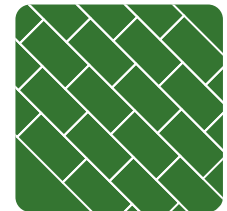
Enhanced Durability

Moisture Resistance



Porosity Control

Consistent Application on Tile



Water Based

Versatility



Saves Time and Money

Easy Formulation



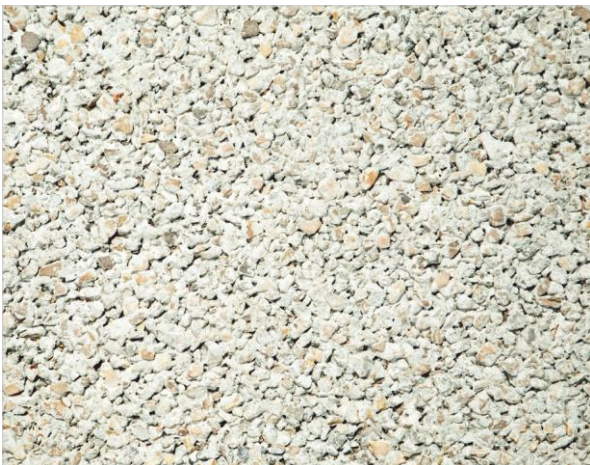
Key Application Areas



High-Moisture Areas



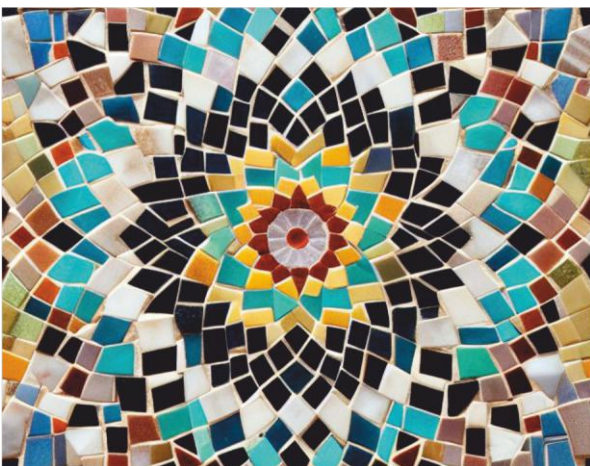
Underfloor Heating Systems



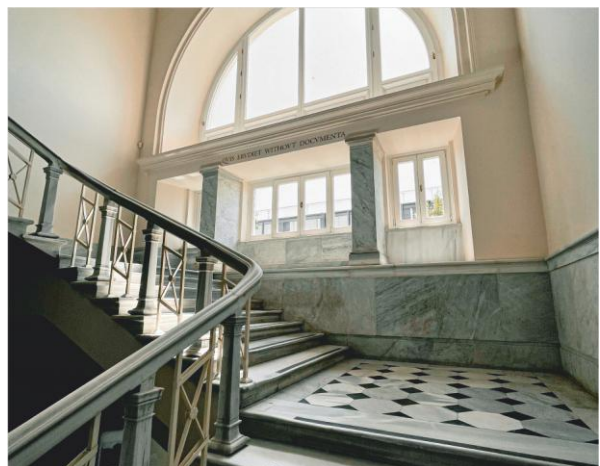
Porous Substrates



Large Format Tiles



Mosaics and Glass Tiles



High-Traffic Areas

Application Methodology



1 Make sure the back surface of the tile is clean and dust free

2 Apply back tile primer directly to the back of the tile with roller



3 Wait until it is touch dry (30 mins at room temperature)

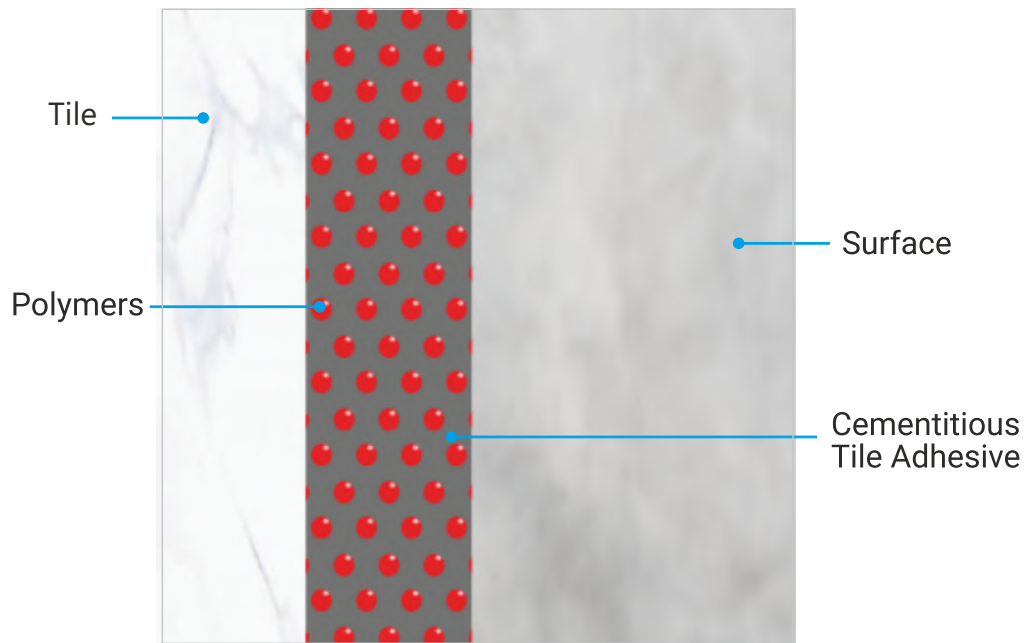


4 Apply adhesive on substrate or back of tile



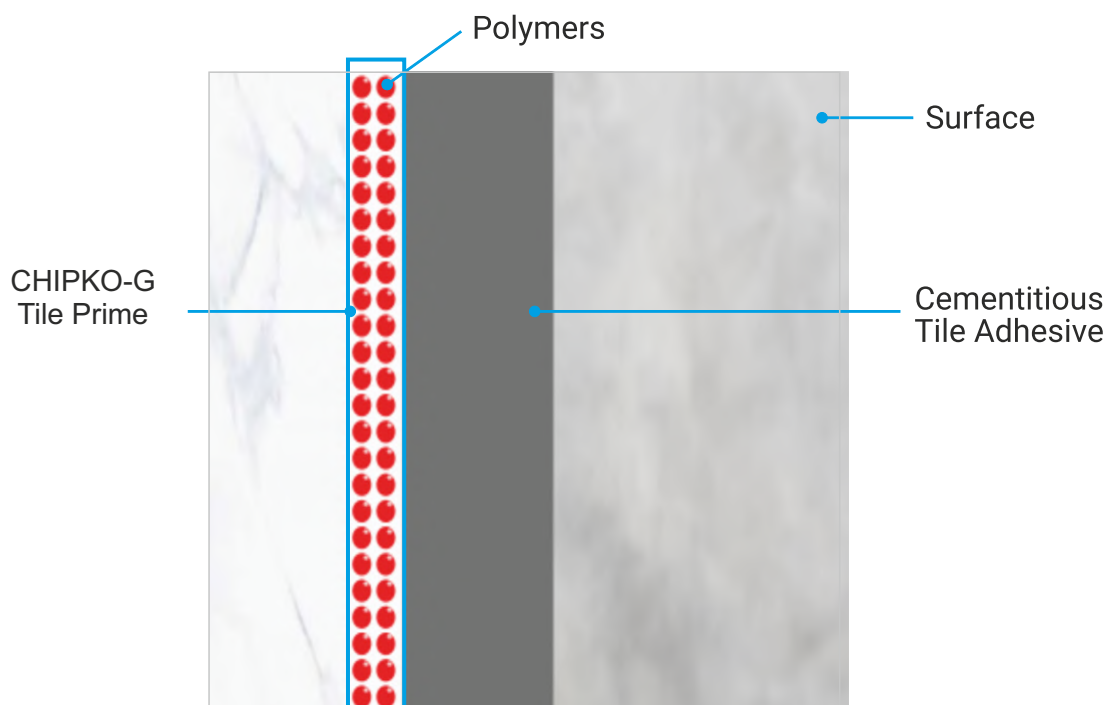
5 Apply the tile on the substrate only

Without Tile Primer



The thick bed method is used to increase the amount of polymer sand thus achieving better adhesion. But it does not necessarily increase the polymers at the bonding surface

With Tile Primer



With just a single thin layer of the primer, the tiles are now strongly adhered to the cementitious tile adhesive

CHIPKO-G TILE PRIME



Packaging: 1kg, 5kg and 20kg Pack



Concrete Works
Construction Chemicals
Private Limited



Concrete Works
Construction Chemicals
Private Limited



CORPORATE OFFICE

Office No. 70, Mahavir Center, 4th Floor, Sector 17, Vashi, Navi Mumbai 400703.
info@cwchemicals.com, www.cwchemicals.com

REGISTERED OFFICE:

CS No. 1471, "DB-House" 4th Floor, Madhavnagar Road, Sangli, Maharashtra 416416.
T: 0233-2622009 / 0233-623009E:

BRANCH OFFICE

Office No.B-1012, 10th Floor,
Kohinoor Square, N. C. Kelkar Marg,
R.G. Gadkari Chowk, Shivaji Park,
Dadar West, Mumbai- 400028 India
T: +91 2249605071

BRANCH OFFICE

Office No.705, 7th Floor,
Pearl Best Heights-1, Netaji Subhash Place,
Wazir Pur Didtrict Centre,
Pitampura, Delhi-110034. India
T: +91 9818116721

BRANCH OFFICE

Office No. 401,
Vascon Eco Tower,
Baner – Pashan Link Road,
Baner, Pune - 411045 India
T: +91 2046012110 / 29997693